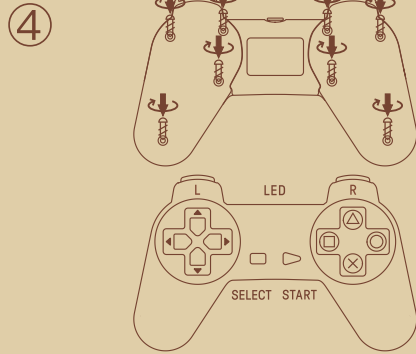
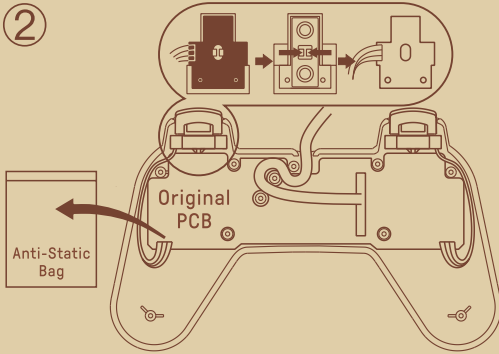
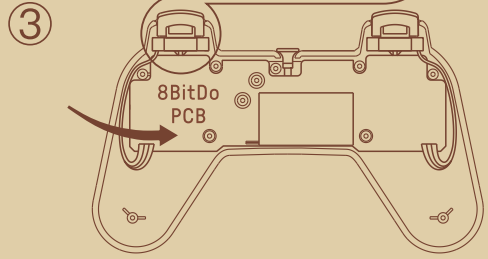
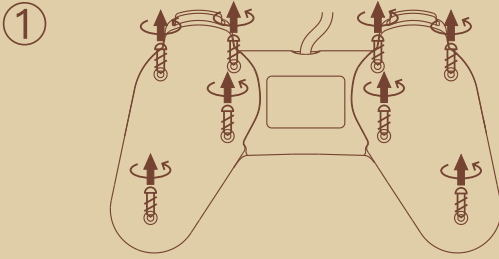


# Instructions - P30 Modkit

8BitDo®

\* Please handle it with care.  
We are not responsible for any damage caused in use.



## Switch



- 1 - press **□ + start** to turn on the controller
  - 2 - press and hold **select** for 3 seconds to enter pairing mode. Blue LED will rapidly blink
  - 3 - go to your Switch Home Page to click on Controllers, then click on Change Grip/Order. LED becomes solid when connection is successful
  - 4 - controller will auto reconnect to your Switch with the press of **start** once it has been paired
- when connected to your Switch, **select + down** = Switch HOME button

## Android (D - input)



- 1 - press **X + start** to turn on the controller
- 2 - press and hold **select** for 3 seconds to enter pairing mode. Blue LED will rapidly blink
- 3 - go to your Android device's Bluetooth setting, pair with [8BitDo P30 Modkit]. LED becomes solid when connection is successful
- 4 - controller will auto reconnect to your Android device with the press of **start** once it has been paired

## Windows (X - input)



- 1 - press **△ + start** to turn on the controller
- 2 - press and hold **select** for 3 seconds to enter pairing mode. Blue LED will rapidly blink
- 3 - go to your Windows device's Bluetooth setting, pair with [8BitDo P30 Modkit]. LED becomes solid when connection is successful
- 4 - controller will auto reconnect to your Windows device with the press of **start** once it has been paired

## macOS



- 1 - press **○ + start** to turn on the controller
- 2 - press and hold **select** for 3 seconds to enter pairing mode. Blue LED will rapidly blink
- 3 - go to your macOS device's Bluetooth setting, pair with [Wireless Controller]. LED becomes solid when connection is successful
- 4 - controller will auto reconnect to your macOS device with the press of **start** once it has been paired

## battery



status -  LED indicator -

low battery mode  LED blinks in red

battery charging  LED stays solid red

- rechargeable via USB-C cable with 90 minute charging time

## support



- please visit [support.8bitdo.com](http://support.8bitdo.com) for further information & additional support

## Switch



1. 轻按方块键 + START 键开启控制器，再按住 SELECT 键 3 秒进入配对状态（指示灯快闪）。
  2. 打开 Switch 主机 Controllers 选项，选择 Change Grip/ Order 选项，等待连接，连接成功后控制器蓝灯常亮。
  3. 下次使用按 START 键可自动连接。
- \* 热键：SELECT + DOWN 可作为 HOME 键。

## Android (D - input)



1. 轻按叉号键 + START 键开启控制器，再按住 SELECT 键 3 秒进入配对状态（指示灯快闪）。
2. 打开 Android 设备蓝牙选项，选择搜索到的 [8BitDo P30 Modkit] 进行连接，连接后控制器蓝灯常亮。
3. 下次使用按 START 键可自动连接。

## Windows (X - input)



1. 轻按三角键 + START 键开启控制器，再按住 SELECT 键 3 秒进入配对状态（指示灯快闪）。
2. 打开 Windows 设备蓝牙选项，选择搜索到的 [8BitDo P30 Modkit] 进行连接，连接成功后控制器蓝灯常亮。
3. 下次使用按 START 键可自动连接。


## macOS




1. 轻按圆圈键 + START 键开启控制器，再按住 SELECT 键 3 秒进入配对状态（指示灯快闪）。
2. 打开 macOS 设备蓝牙选项，选择搜索到的 [Wireless Controller] 进行连接，连接成功后控制器蓝灯常亮。
3. 下次使用按 START 键可自动连接。

## 电源



电量状态  指示灯状态

低电量  红灯闪

充电中  红灯亮

- \* 可使用配备的 USB 线进行充电，充电时间约 90 分钟。

## 固件升级



- \* 请访问 <http://support.8bitdo.cn/> 了解详细信息。